

For safe, temporary access across soft ground and in extreme weather conditions, **Isotrack X** is the ultimate, extreme, heavy duty mat.



KEY FEATURES

- Outstanding compressive strength more than 415 tonnes/m² reaching max force 730 tonnes/m²
- Each mat has two excellent traction surfaces
- Surface traction design for safe movement of vehicles
- Foam filled core prevents water ingress if mat is punctured (no cross contamination and no additional weight)

KEY BENEFITS

- Compression moulded high performance thermoplastic material
- Robust, durable, high performance mat
- Overlap lip for interlocking mats to make roadways or working pads
- Patented Four3 connector pin system
- Cellular core construction provides buoyancy in water-logged areas
- Highly efficient weight dispersal across a wide range of ground conditions
- Reduce dust pollution on dry soils
- Protect sensitive habitats
- Protect ground from pedestrian traffic
- Easy and durable connection system
- Customer logo option
- Long life and recyclable at end of life





Patented 'Four3' connector pin system





APPLICATIONS - MAIN SECTORS

- Oil and gas
- Utilities
- Construction
- Petrochemical
- Transmission
- Temporary helipads
- Wind farms
- Pipelines
- Quarries and mining
- Commercial timber and woodlands operations
- Any project requiring safe temporary access for heavy vehicles and equipment

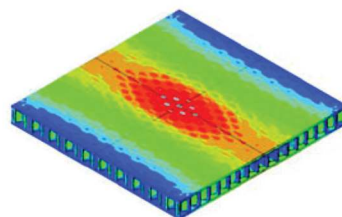
SAFETY AND EFFICIENCY

Engineered for performance and strength, the interlocking mats distribute weight across a large surface area while remaining stable and strong through all operating conditions. The surface tread improves traction and safety for load-bearing vehicles, while the patented Four3 connection system reduces mat drift and slippage. The mats provide years of reusable performance with proper use and maintenance.

ANALYSIS AND TESTING OF ISOTRACK X MATS

FEA Analyses

Faculty of Mechanical
Engineering Maribor
Slovenia



3 POINT LOAD TESTS

Faculty of Civil and
Geodetic Engineering/
University of Maribor



COMPRESSION TEST

Faculty of Civil and
Geodetic Engineering/
University of Ljubljana



CYCLIC DEFLECTION TEST

Faculty of Civil and
Geodetic Engineering/
University of Ljubljana:
100.000 cycles no break



LOW TEMPERATURE TEST AT -40 DEGREES

IABG Munich-Germany
NO BREAK



BENDING TESTS AT AMBIENT TEMPERATURE NO BREAK



General information	
Overall Dimensions	4000 x 2000 x 94 mm
Useable Surface Area	1,8 x 3,8 m = 6.84 m ²
Weight	360kg
Colour	Sand (standard), other colours optional
Logistic	Standard high cube 40 feet container 50 mats, Truck standard EU 60 mats
Handling	Designed for end users, 2-sided mat; for different type of vehicles
Recycling	100% recyclable
Safety	Nub structure prevents slips, trips, falls
Environmental	No liquid absorption, chemically inert, allows easy decontamination-cleaning
Compressive load capacity: 605 psi*	415 tonnes m ²
Load bearing capacity	In excess of 200t*
Fire Rating	UL 94HB

* Load capacity is dependent to ground conditions.



For more information, contact us
today or visit our website:

www.groundtrax.com

GROUNDTRAX
 Ground Protection and Reinforcement
 Telephone: 03456 800008 | Fax: 03456 800208
 E-Mail: info@groundtrax.com | Website: www.groundtrax.com